

S.W.1/4 SEC. 15 - 6 - 2 - 5

S.E.1/4 SEC. 15  
6 - 2 - 5

ROAD PLAN 7927 H.T.

GOVERNMENT ROAD ALLOWANCE

ROAD PLAN 7927 H.T.

N.W.1/4 SEC. 10  
6 - 2 - 5

ROAD PLAN  
831 1575

N.W.1/4 SEC. 10  
6 - 2 - 5

ROAD PLAN 841 0414

ROAD PLAN 831 1575

LOT 6  
BLOCK 5  
PLAN 841 0414

1st AVENUE  
PLAN 7850 A.L.

Common Approach

LOT 13  
BLOCK 7  
0.253 ha.  
(0.6 Ac.)

LOT 12  
BLOCK 7  
0.210 ha.  
(0.5 Ac.)

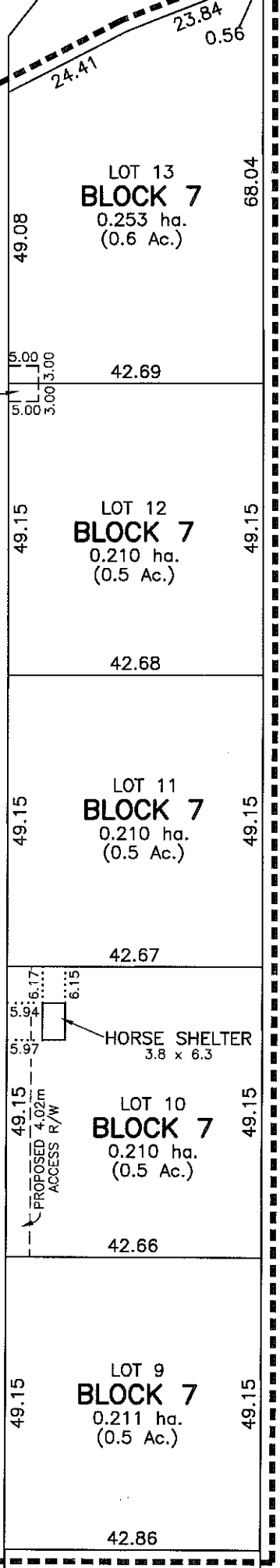
LOT 11  
BLOCK 7  
0.210 ha.  
(0.5 Ac.)

LOT 10  
BLOCK 7  
0.210 ha.  
(0.5 Ac.)

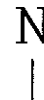
LOT 9  
BLOCK 7  
0.211 ha.  
(0.5 Ac.)

LOT 1  
BLOCK 7

PLAN 841 0592  
LOT 2



N.E.1/4 SEC. 10 - 6 - 2 - 5



BOB LOWE

TENTATIVE PLAN SHOWING SUBDIVISION  
of part of  
N.W.1/4 SEC. 10; TWP. 6; RGE. 2; W.5 M.

Municipal District of Pincher Creek No. 9

**bob** brown okamura & associates ltd.  
Professional Surveyors  
514 Stafford Drive, Lethbridge, Alberta

APPROVED	DRAWN	CJB	DATE	July 25/07
	CHECKED	RFB	JOB	07-9237
	SCALE		DRAWING	07-9237T
				1:1000
				R. F. Baker, A.L.S.

NO.	REVISION	DATE	BY
1	Added common approach	Oct. 11/07	cb

NOTE : Portion to be approved is outlined thus ----- and contains approximately 1.094 ha. Distances are in metres and decimal parts thereof. Distances and areas are approximate and are subject to change upon final survey.