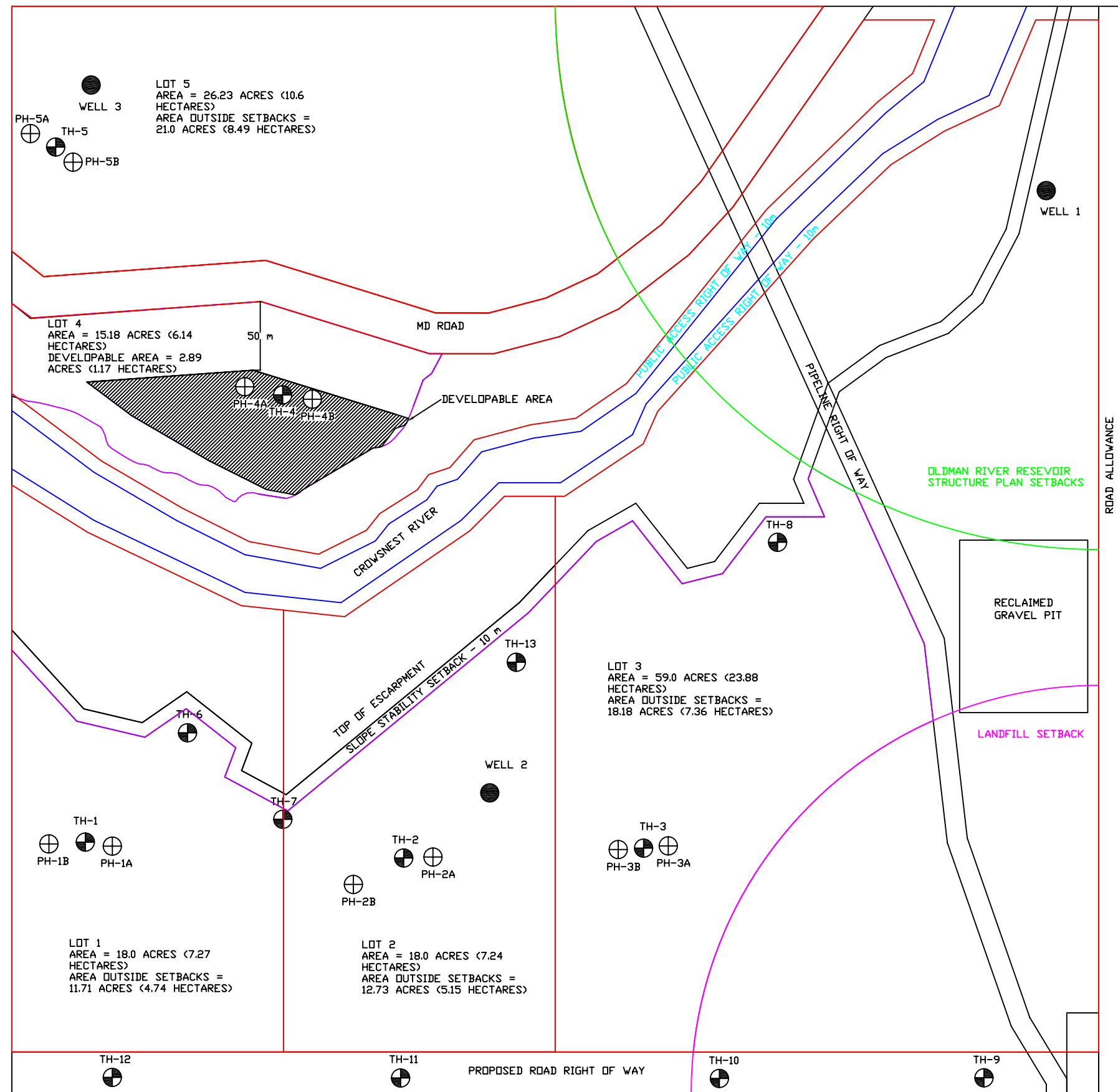


NOTES:

1. The developable area of Lot 4 was based upon a topographic survey of the lot in conjunction with the determination of the existing high water mark for the Crowsnest River. Using the high water mark of 1125.75m and assuming the maximum change in river level of 3.25m, the 1129m contour is used as the developable envelope



LOT 5
AREA = 26.23 ACRES (10.6 HECTARES)
AREA OUTSIDE SETBACKS = 21.0 ACRES (8.49 HECTARES)

LOT 4
AREA = 15.18 ACRES (6.14 HECTARES)
DEVELOPABLE AREA = 2.89 ACRES (1.17 HECTARES)

LOT 3
AREA = 59.0 ACRES (23.88 HECTARES)
AREA OUTSIDE SETBACKS = 18.18 ACRES (7.36 HECTARES)

LOT 1
AREA = 18.0 ACRES (7.27 HECTARES)
AREA OUTSIDE SETBACKS = 11.71 ACRES (4.74 HECTARES)

LOT 2
AREA = 18.0 ACRES (7.24 HECTARES)
AREA OUTSIDE SETBACKS = 12.73 ACRES (5.15 HECTARES)

LEGEND	
⊕	TEST HOLE
●	WATER WELL



SITE PLAN
PROPOSED DEVELOPMENT
NE 27-7-2-W5M
MD OF PINCHER CREEK NO.9, ALBERTA

DRAWN BY	MJS	DATE	SEP 11, 08
CHK'D BY	WEC	DRAWING NO.	D-1
SCALE	NTS		
FILE NO.	208-2077-001		